



### BLUE ASH WORKING WITH ICMA TO EXAMINE BUDGET, PLANNING

Blue Ash is working with a national leader, the International City/County Management Association (ICMA), to evaluate and prioritize City services as a way to assist in budgetary planning. ICMA is a well-respected, leading organization which is the major professional and educational source for chief appointed managers and administrators in cities, towns, counties, and regional entities throughout the world.

The course of action is intended to help focus the City's decision-making process by basing priorities on outcomes. According to ICMA, addressing current fiscal realities while still meeting the objectives and the expectations of constituents represents the biggest challenge to every organization's long-term fiscal wellness. Prioritization of services creates an objective and transparent decision-making process, one that ensures programs of higher value to citizens—those that achieve the organization's objectives most effectively—can be sustained through adequate funding levels regardless of the economic conditions.

This process began at the January 28 Council work session, led by local government advisors Jon Johnson and Chris Fabian of ICMA. At that meeting, the prioritization process was explained, and Council underwent an exercise to focus upon the City's "results" (or overall objectives/strategic goals). A summary of those results, listed in no particular order, includes the following:

- ▶ Quality and diverse leisure-time activities
- ▶ Connected, accessible, & reliable transportation network
- ▶ Quality and desirable neighborhoods
- ▶ Strong and vibrant economic development
- ▶ Attractive and well-maintained community
- ▶ A safe community

"Whether there are more resources to distribute or less, prioritization leads decision makers away from the traditional 'across the board' spending/reduction methodology," said Jon Johnson, of ICMA.

*(ICMA article continued on Page 2.)*

### ROAD CONSTRUCTION UPDATE...

Road construction issues for coming months in Blue Ash are summarized below ...

**Greater Cincinnati Water Works (GCWW) -- Kenwood/Cooper area:** Work began in late February for replacement of a major waterline in the vicinity of Kenwood and Cooper Roads that begins in Blue Ash and will ultimately end later this year (or in 2011) in Montgomery at the Pfeiffer/Montgomery Road intersection. The first phase of the project began just west of Kenwood Road on Cooper Road in Blue Ash in late February,

and will continue in Blue Ash until approximately the post office/library area in downtown. This segment of the project will be complete by May 1. The project then picks up where it left off on Cooper Road in June after school is out, with Blue Ash's portion of the project to be complete this summer. This project required closure of the Cooper/Kenwood Road intersection for two weekends in late February/early March. Blue Ash and Montgomery area residents will receive notice from GCWW of an open house

to be scheduled in April regarding this project. Work in residential areas will be completed during the day; and work in business areas will be completed during evening and weekend hours. GCWW informs us that residents and businesses serviced by this replaced transmission line will see enhanced water quality, increased water capacity, and improved system reliability once this project is complete.



*(Road construction info continued on Page 2.)*

### IN THIS EDITION ...

<i>Blue Ash Working with ICMA</i> . . . . .	1-2	<i>Mark Your Calendar</i> . . . . .	5
<i>Road Construction Update</i> . . . . .	1-2	<i>Future Park &amp; Golf Course Updates</i> . . . . .	6
<i>Street Safety/Maint. Town Hall Mtg.</i> . . . . .	2	<i>Hunt Home to be Stop on Historic Trail</i> . . . . .	6
<i>Challenging Budget Times</i> . . . . .	3	<i>Blue Ash Notes</i> . . . . .	7
<i>Trash Talk</i> . . . . .	4	<i>Community Connectivity Update</i> . . . . .	7
<i>Community Bulletins</i> . . . . .	4	<i>Memorial Day Parade</i> . . . . .	Back
<i>Recreation News</i> . . . . .	5	<i>It's Census Time, Blue Ash</i> . . . . .	Back
<i>Public Information Update</i> . . . . .	5	<i>Property Maintenance Reminders</i> . . . . .	Back

A Newsletter Published by the  
 City of Blue Ash, Ohio  
 4343 Cooper Road  
 Blue Ash, Ohio 45242-5699  
 (513) 745-8510  
 administration@blueash.com  
 Internet: www.blueash.com



## ICMA Budget Planning Article (continued from Page 1)

"Instead, leaders are guided towards allocating available resources to those programs most highly valued by the organization and most importantly, by the citizens who depend on those programs for their well-being, their comfort, and their expected quality of life."

Using prioritization, government organizations establish core goals, results and objectives, with input from the citizens, elected officials, and administration. This helps to implement a holistic approach that aligns strategic planning with resource allocation. It also provides an easier way to develop performance measurement and management. Further, prioritization provides a process by which significant capital and other one-time expenditures for the foreseeable future can be evaluated in order to identify those projects and initiatives that are of the highest priority.

Ultimately, ICMA believes that through prioritization, governments can determine which programs and services are the most effective use of tax revenues to attain goals. Blue Ash Council and the Administration see this as an additional tool in our existing efforts in planning and the budget process to enhance our decision making.

Two near future opportunities will be offered to seek direct assistance from residents:

- ▶ A public input terminal will be established at the Recreation Center asking for resident's ranking of the various goals and strategic objectives determined through the prioritization process. Stay tuned to BlueAsh.com for updates regarding this opportunity.
- ▶ An open house will be held on Thursday, March 25, from 4:30 to 6:30PM, in Council Chambers of the Municipal & Safety Center, to give interested citizens the opportunity to learn more about the prioritization process underway. There is no formal presentation planned during this time period – just stop in at your convenience to learn more about these efforts.

Though not directly a part of the prioritization process, a supplemental activity in the form of a citizen survey will also be conducted. With assistance from the Institute for Policy Research of the University of Cincinnati (IPR), a formal, scientific citizen survey will take place sometime in March via telephone. IPR will poll approximately 500 Blue Ash adults to be randomly selected for participation in this telephone survey. Though at the writing of this newsletter the telephone questions have not yet been formulated, it is likely that several questions will be tied to the prioritization process.

Stay tuned to BlueAsh.com for the latest information about this budget prioritization process.

## Road Construction Info (continued from Page 1)

**GCWW - Hunt Road between Plainfield and West Avenue, including "Birdville"** - The second major Water Works project scheduled to happen this year will take place along Hunt Road between Plainfield Road and West Avenue to replace an old water main. In addition, the old main in the Home Acres subdivision (referred to by many as "birdville," due to the street names) will be replaced. This project will begin sometime in March and is anticipated to be complete in August. During construction, Hunt Road will be reduced to one lane with delays for motorists likely.

All disturbed surfaces will be temporarily restored as both projects move forward, with final restoration to the road surface to be

made at some point soon thereafter. Other than the closure of the Kenwood/Cooper intersection in late February and early March, no other complete road closures are anticipated, and emergency access will be maintained at all times. No interruptions to water services are anticipated; however, if the need arises for GCWW to do so, they will notify property owners before any scheduled interruption.

Questions regarding the GCWW road projects described above should be directed to GCWW at 591-7700.

**Downtown traffic signals** - In 2010, the City of Blue Ash plans to replace six traffic signals in the Downtown area on Kenwood Road from the Kenwood/Cooper intersection to

the Kenwood/YMCA intersection and the Cooper/Hunt intersection. The new signals will be energy-saving LED signals and will be "coordinated" to provide a smooth flow of traffic on Kenwood Road during heavy traffic periods. New traffic signal poles will be installed at all intersections, as well as battery back-up systems to allow the continued operation of signals during power outages. Additionally, crosswalks will be enhanced to provide safer crossings for pedestrians. This project is partially funded with a CMAQ (Congestion Management/Air Quality) (CMAQ) grant from the Ohio-Kentucky-Indiana Council of Governments. This project is anticipated to begin in summer 2010 and be complete in spring 2011.

## STREET SAFETY & MAINTENANCE TOWN HALL MEETING THURSDAY, APRIL 15, 6:30PM

On Thurs., April 15, in Blue Ash Council Chambers (4343 Cooper, 45242), Mayor Mark Weber will host a Town Hall meeting open to the Blue Ash community with the featured topics being street safety and street maintenance. The Town Hall meeting will be informal in structure, will begin at 6:30PM and end at approximately 8:30PM, and is open to Blue Ash residents interested in discussing these topics. In addition to Mayor Weber, representatives from our Public Works and

Police Departments will be on hand to answer questions or address concerns from citizens.

Questions regarding this meeting should be directed to the City Manager's Office at 745-8510 or via E-mail to the Mayor at [mweber2@cinci.rr.com](mailto:mweber2@cinci.rr.com).



# CHALLENGING BUDGET TIMES FOR ALL OF US ...

In early 2010, the Public Information Office asked local media to publish information from the Blue Ash Treasurer, providing an update to the City's overall financial planning activities. That information, along with some minor updates, is reproduced below in case you didn't get a chance to review it then ...

The City of Blue Ash engages in an annual budget process, providing an opportunity to review and prioritize the services and capital projects the City plans to provide for its residential and corporate citizens in the upcoming year. Over the past several weeks, the Administration has been diligently working on preparing this 2010 Budget for presentation to Council. Like virtually all municipalities across the nation, recent economic conditions have had a significant impact on Blue Ash revenues. It is important to note the planning process also includes consideration of our longer-term financial expectations.

The City of Blue Ash enjoyed a 20-year double-digit revenue growth period from the late 1970s to the late 1990s, experiencing an average earnings tax growth rate of +12.7% per year. However, over the past ten years, Blue Ash's revenue stream has leveled out and has experienced very little growth – characteristic for a maturing community such as ours.

This flat revenue pattern presents challenges given increasing operating and capital expenses. The impact on Blue Ash from our maturing status was intensified by two significant national-level economic downturns during the last ten years: the attack on our nation that occurred on September 11, 2001 and the ongoing economic recession. Recovery from the 9-11 recession took at least three years for Blue Ash to rebound from a revenue standpoint, and the Administration anticipates that recovery from this current economic crisis could be even longer – perhaps three to five years. Such factors must be considered in the budget process.

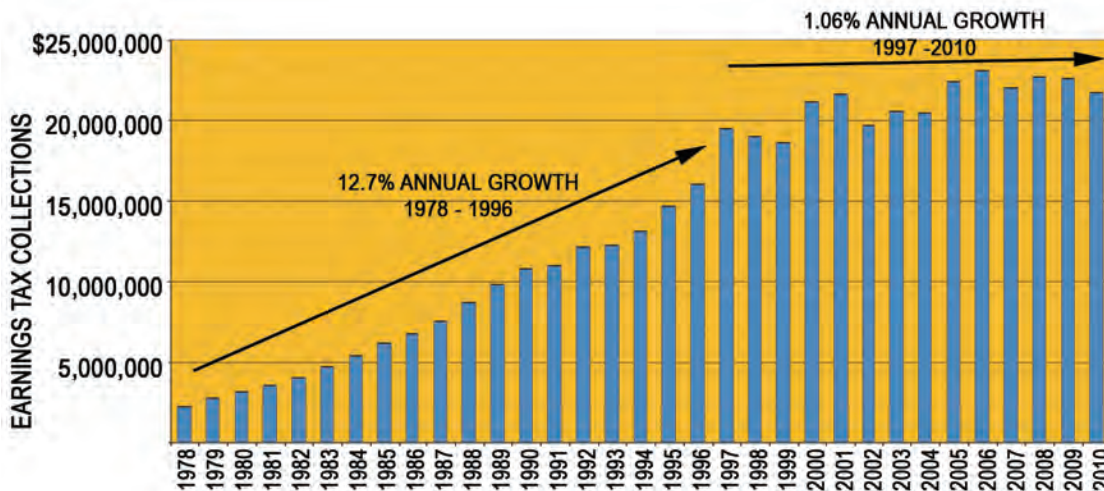
It is fortunate that a number of years ago, City leaders recognized the longer-term budget trend, and formulated a plan to address the influences of a maturing community and shifts in economic conditions. Over years since, the City has been focused on building or maintaining its general fund reserves, and the Administration and

Council have been making deliberate budget adjustments. Every department has been working on cost containment, improvements in efficiency, and a greater awareness of the impact of a level, or downward sloping, revenue flow. These factors affect not only ongoing operations, but funding for anticipated capital replacements and improvements. If the City had to deal only with the conditions associated with a maturing community, these efforts would have been more than sufficient to keep things on track. However, given the severity of the revenue declines following 9-11 and during the current recession, the impact upon the City's earnings tax collections (our greatest source of annual revenue) has been quite significant, requiring even further adjustments.

Although it is clear that additional implementation of operational cost-saving measures will be necessary in the 2010 and near future budgets, the driving goals of Blue Ash will remain unchanged: to continue investment in community infrastructure, such as roads, sidewalks, storm drainage, etc.; to continue the provision of quality core services for residential and corporate citizens, such as snow and ice control, police and fire public safety services, etc.; and to continue investment in community assets and programming, such as the recreation center and other parks, special events, etc. Longer-term, we will focus on operational cost containment and reductions to minimize impact in these core areas which are so important to our citizens, community, and quality of life.

Although Blue Ash is fortunate to have fared better than most communities in the region, we are not immune to national trends and economic downturns. Blue Ash has been blessed in so many ways, and has benefited from the actions of progressive City leaders and from the strong support of our community. The Administration and Council will continue to work hard to address these budgetary and operational challenges in coming months to assure the long-term financial stability and security of the City, and the City will continue to provide the highest quality services and amenities which our citizens deserve and expect.

Citizens are encouraged to regularly check the City's [BlueAsh.com](http://BlueAsh.com) website for updates relating to the 2010 budget and other important issues affecting our community.



This chart is helpful in showing the growth experienced from the late 1970s to the late 1990s, representing an annual average growth of 12.7%. Blue Ash's revenue stream has since leveled out & has experienced very little growth -- characteristic for a maturing community such as Blue Ash. This flat revenue pattern presents challenges given increasing operating & capital expenses. Council & the Administration have been monitoring this pattern for some time.

## TRASH TALK ...

Let's talk trash! We mean, let's talk real trash in the form of LITTER!

Our beautiful City seems to have developed a "litter rash" all over town. Paper cups, hamburger wrappers, pieces of paper, plastic bottles, etc., are turning up all over town and they are making our streets, sidewalks, and grassy areas look terrible. Even though one of your City employees spends almost half his time picking up litter around town, we just can't keep up with it all.

We know that most Blue Ash citizens would never think of throwing their trash onto the street, but accidents do happen. If something gets away from you, please pick it up and put it in a garbage can. Keep trash in your car until you get to home or work and can throw it away. If you see trash and paper around a parking lot or place of business,

mention it to the Manager of the business. If you see someone throw trash on the ground, let them know they accidentally dropped something. If you see an area with lots of litter (like a newspaper that's blown all over), call the Service Department at 686-1250 and let us know so we can pick it up before it gets worse.

Two other things you can do that are above and beyond the call of duty. First, when you are out for your daily walk or while walking to the store, carry a plastic bag (like the one from the grocery) in your pocket and pick up the litter you see along the way. These bags aren't good for much anyway and frequently end up as litter, so using them as "litter bags" would really help make our streets look better. Second, form a "Litter Patrol" with neighbors in your neighborhood. We all

want our neighborhoods to look great and keeping them free of litter is an ideal way to keep them looking great.

Finally, the City is evaluating whether we can establish a safe program for volunteers to adopt sections of roads or streets to pick up litter on a regular basis. This program would be similar to the ones you see for sections of Interstate Highways, but would be for our local streets. Interested? Please contact us at 745-8538 with your name, phone number and E-mail.

If we all work together to prevent litter from happening and to quickly correct a litter problem when we see it, Blue Ash will continue to be the beautiful community we have all learned to enjoy. Please help.



## COMMUNITY BULLETINS...

Another summer of delightful music is planned for residents of this area as the **BLUE ASH/MONTGOMERY SYMPHONY ORCHESTRA** gears up for its 2010 festival concert series, as summarized below:



- Sat., May 29, 6PM: Blue Ash Towne Square. Note the change to the scheduling for this concert to be on Saturday of the Memorial Day weekend.
- Sat., July 3, 7:30PM: Montgomery Park (Montgomery and Schoolhouse Roads).
- Mon., September 6 (Labor Day), 6PM: Blue Ash Towne Square.

All Blue Ash/Montgomery Symphony concerts are free and open to the public. Fixed seating at all locations is limited, so lawn chairs/blankets are encouraged. Call 232-0949 or check out [www.bamso.org](http://www.bamso.org) for more details about these concerts and other Symphony news.

The **BLUE ASH WOMANS CLUB** is hosting their annual spring luncheon on Sat., April 10, from 11AM to 2PM at the Blue Ash Presbyterian Church. The cost is \$25, and includes high tea lunch, favors, and door prizes. Proceeds benefit the Club's scholarship and continuing education grant pro-

grams. Call Beverly at 891-4043 for more information or tickets.

The **BLUE ASH HISTORICAL SOCIETY** is on the lookout for new members and volunteers. Just one example of a fun activity asked of the volunteers is to help staff the City's Historical Hunt House during special events and other programs held at the beautiful home. If you're interested in history in general and would like to actively participate in preservation of Blue Ash's local history, contact President Tom Bell at 324-7145 or via E-mail to [tomnkt421@aol.com](mailto:tomnkt421@aol.com).

**MATTHEW 25: MINISTRIES (M25M)** continues to provide aid to the people of Haiti in the aftermath of the worst natural disaster in modern history – the massive earthquake that devastated the area in January. M25M reports that more than 100,000 people are reported dead with many more injured and as many as 3,000,000 people affected by the disaster. An assessment team from Matthew 25 was on the ground in Haiti a week after the disaster, and M25M sent a medical mission team in late February. Please continue to support Matthew 25 with your financial gifts as well as gifts of time and products.

More news from M25M ... tests continue on

M25M's newly completed Food Processing Center. The Food Processing Center will package a shelf-stable nutritionally enhanced rice-soy product – processing about 10,800 bags of food per operational day. One day's activity provides food for 64,800 people! M25M is also the beneficiary of a golf outing in May 2010 to be held at TPC Rivers Bend in Warren County. For more information about the outing or the many worthwhile projects being led by M25M to benefit our world, check out their website at [www.m25m.org](http://www.m25m.org) or contact Joodi Archer at [joodi@m25m.org](mailto:joodi@m25m.org).

Congratulations to **BLUE ASH RESIDENT MARGOT WAYNE** who has been selected to compete in the National Games for Special Olympics in July in Nebraska. Only four athletes from Ohio are selected for swimming! What an honor for Margot -- and for her hometown of Blue Ash as well! Good luck, Margot!

*(If you have interesting and good news about a Blue Ash resident for potential use in future City publications or eBlast! electronic newsletters, feel free to forward that information to [sbennett@blueash.com](mailto:sbennett@blueash.com) or call 745-8510.)*



## RECREATION NEWS ...

Some exciting changes are on the way in 2010 related to the Parks & Recreation Department ... for example:

Did you know that **40 free concerts** will be held this summer? The Tuesday concerts begin on June 8 and continue through August. Remember too that these Tuesday concerts will return to their original home in the Amphitheatre in 2010. The popular Friday Concerts on the Square series begins June 4 (see note below about SummerBratation) and continues through August 20. The Thursday Lunch concert series in September will be held beginning September 9. (Check out the concert portion of BlueAsh.com for the latest schedule of performers.)

Beginning in 2010, the **Parks & Recreation Department will no longer be mailing out its seasonal recreational brochures** to residents. The brochure containing the latest regarding the Center's classes and programs will be posted on-line through the Parks & Recreation portion of BlueAsh.com, and limit-

ed quantities of printed versions will also be available upon request at the Center.

The **2010 SummerBratation event, normally held in early June, has been POSTPONED**, and will not be held in 2010. This decision was made during the 2010 Budget process, and the hope is that this event may return in 2011. But don't worry, country music fans, as the plan is to incorporate country music performances into other Blue Ash special events throughout the year.

The **location for this year's Red, White & Blue Ash event on July 4th has been CHANGED**.

Due to logistical challenges presented at the Sports Center, the event will be moved in 2010 to the **NORTHWEST CORNER OF GLENDALE-MILFORD AND REED HARTMAN HIGHWAY**, across from the Blue Ash Airport. Many thanks to property owners Duke Realty, Huntington Bank, and Buffalo Wild Wings for allowing use of their properties for this event. Event organizers believe this will represent a positive change as traffic flow into and out of

the event should be enhanced at this new location. Also – organizers have a lot of fun surprises planned at this location.

Here's a summary of national entertainment booked to date for this year's special events:

- ▶ Red, White & Blue Ash (July 4): Peter Frampton and Yes.
- ▶ Taste of Blue Ash (Aug. 27-29): Atlanta Rhythm Section and Little River Band (Friday); Player, Night Ranger, and The Guess Who (Saturday); and Phil Vassar (Sunday). Note that the 2010 Taste represents the 25th annual!

Note that coolers are prohibited at both the July 4 and Taste events.

Make sure to keep an eye on the Parks & Recreation portion of BlueAsh.com for the latest news about the numerous free and fun activities and events planned for your family's enjoyment ... right in your back yard!



## PUBLIC INFORMATION UPDATE...

Just a reminder of some of the newer efforts by your City Hall to enhance public info. Questions regarding these should be directed to 745-8510 or via E-mail to sbennett@blueash.com.

*Remember too that the City's website, BlueAsh.com, is and always has been the best source for the most accurate info about your Blue Ash community and local government!*

**eBlast! Electronic Newsletters** – If you haven't already signed up to receive the City's electronic newsletter, Blue Ash eBlast!, make sure you do so. About once a month, these electronic newsletters are sent to subscribers and include the latest and most accurate info about what is happening in your community. As of early 2010, over 900 have signed up. It's easy ... from the BlueAsh.Com home page, click any of the 5

banner buttons, find the "newsletter subscriptions" link in the list on the left side of the screen, and follow the prompts to enter your E-mail information.

**Twitter** – Citizens can now be a Blue Ash "follower" on Twitter and receive regular "tweets" from City Hall. This popular social networking tool is used mostly to communicate upcoming events, road conditions, etc. Watch for additional use of social media likely to be implemented in 2010.



**Open City Hall forum** – In continuing efforts to enhance citizen engagement, Blue Ash launched a new online forum to allow additional means for input on current community issues. The forum is easily accessible from any page of BlueAsh.com, and is hosted and monitored by

Peak Democracy, a non-partisan company whose mission is to broaden civic engagement and build public trust in government. Blue Ash posts a question/topic regularly, inviting comments from the public about that issue.

**Customer Service Response** – Blue Ash's newest communication tool for Blue Ash citizens, a Customer Service Response system, went live late in 2009. Like other web-based services, it too is easily accessible from each page of the BlueAsh.com website. This is a work request program that allows citizens to request virtually any City service from the convenience of their homes. Examples of typical requests submitted through the system include reporting of potholes and other road problems, property maintenance violations, and street light outages.

## MARK YOUR CALENDAR ...

**Thurs., Mar. 25** – Open House re: City's budget prioritization process. 4:30PM–6:30PM. See article beginning on Page 1.

**Thurs., Mar. 25** – City Council meeting, 7PM.

**Thurs., Apr. 8** – City Council meeting, 7PM.

**Sat., Apr. 10** – Recreation summer programs registration begins for residents @ 8AM. For businesses, 10AM.

**Sat., Apr. 10** – Hunt House open – "spring carnival" theme, Noon.

**Mon., Apr. 12** – spring curbside leaf pickup day (one day only).

**Thurs., Apr. 15** – Town Hall meeting, 6:30PM – topics: street safety & street maintenance. See article on Page 2.

**Thurs., Apr. 15** – 2009 Blue Ash Tax Returns & 1st Qtr. 2010 City taxes due. (Copy of Federal extension must be filed with BA tax.)

**Thurs., Apr. 22** – City Council Meeting, 7PM.

**Fri., Apr. 23** – Earth Day celebration, 4PM–7PM, Nature Park.

**Sat., May 1** – Neighborhood cleanup day, 9AM–3PM – see "Blue Ash Notes" article, column 1, on Page 7.

## FUTURE GOLF IMPROVEMENTS & SIGNATURE PARK PROJECTS ...

Issue 15 approved by Blue Ash voters in November 2006 provided resources for a number of future major capital improvements for the benefit of our citizens. The first improvement was the renovation and expansion of the Recreation Center, which was completed and dedicated in 2009. The next major project associated with Issue 15 and promised to voters includes future enhancements of Golf Course services and facilities, including work towards the construction of a new multi-functional clubhouse/banquet facility (see architect's renderings). Exterior design concepts for a new facility were presented to Council in late 2009, and in 2010, it is likely that open houses will be held to seek further public input regarding clubhouse design. In 2009, it was decided that in order to minimize inconvenience to the public that other necessary course improvements be done at the same time as clubhouse construction -- such as irrigation and cart path improvements. City Council and the Project Team have selected Schumacher-Dugan Construction as the project's construction manager (after an interview process).

Though planning and design will continue, as of early 2010, it is not certain when construction for a new clubhouse/banquet facility will begin given the current downturn in the economy. While the economic situation presents a unique opportunity to take advantage of a competitive construction market (representing the potential for significantly lower construction costs), the Administration continues to closely monitor Issue 15 and other earnings tax revenues. The hope is that construction can move forward late in 2010 or early 2011.

Work also on the feasibility and design of a family-oriented golf learning center on the airport park property continued throughout 2009. The thought is to include a six-hole short course and a driving range on the airport park property (oriented towards Plainfield/the Golf Course) that would require no major changes to the current championship layout golf course west of Plainfield. The new short course would be family-oriented, environmentally-friendly, and would be attractive to members of our business community who might not have the time to play a regular full round of golf.

Development of the future 130-acre signature park near the Airport is the other major capital project promised to citizens. However, before Blue Ash can move forward with development of the park, the

City of Cincinnati must resolve issues associated with airport operations. The original purchase contract, finalized in 2007, provided Cincinnati three years (plus two optional one-year extensions) to finalize the airport configuration on the remaining 98 acres at the site. Cincinnati has formally requested one of those optional year extensions in February (to give them more time to work with the FAA), and as of the writing of this newsletter, Cincinnati is awaiting approval from the FAA as federal funds will be required to reconfigure airport operations. In the meantime, Blue Ash remains committed to the airport and continues to support Cincinnati's efforts to receive FAA funds to keep it operational. Should that process not prove successful, Blue Ash has a contractual right to match any purchase offer on the remaining 98 acres, and will go through a due diligence process to determine financial feasibility. Regardless of whether the airport remains open or not, Blue Ash will likely begin development of the new "Central" park around 2012-13, depending on the economy. The City looks forward to development of this wonderful future 130-acre park and believes it will be a source of pride for Blue Ash residents for generations to come.



*Pictured are two architect's renderings (by Steed Hammond Paul) depicting a CONCEPT for a potential new multi-functional golf clubhouse. Top is a front view from Cooper Road, & bottom is a rear view from the course. Note that design is NOT final & that this is conceptual only as of early 2010.*

## HISTORICAL HUNT HOME TO BE STOP ON HISTORIC TRAIL

Did you know that the City's historical Hunt Home at 4364 Hunt Road was raided by Confederate General John Hunt Morgan during his Great Raid of 1863 during the Civil War? Morgan's Raid is significant to American and Civil War history since it represents one of the longest raids of the Civil War; is the farthest north that any Confederate force traveled during the Civil War; is thought to be the longest cavalry ride in the U.S.; and represents the largest military action of the Civil War in both Indiana and Ohio.

For several years, the Ohio Department of Transportation and the Ohio Historical Society (the State's official branch for developing and maintaining state historic parks, trails, and markers) have been working toward finishing the Civil War Heritage Trail, which will be

Ohio's longest - over 500 miles. Most communities in the northern half of Hamilton County will be a part of this historic trail, which will pass through 17 other Ohio counties. The entirety of the trail, which is a 1,000-mile long historical driving tour and has been in development since 1999, crosses Tennessee, Kentucky, Indiana, and (soon) Ohio. It is anticipated that Blue Ash's directional and interpretive signs, including one at the Hunt House, will be installed this summer.

Stay tuned to BlueAsh.com as more definitive plans develop regarding this interesting project!



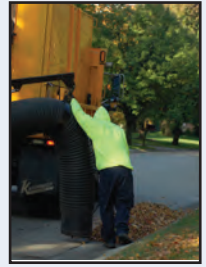
## BLUE ASH NOTES...

Did you know that you can access the **general Blue Ash website** via three internet addresses? [www.BlueAsh.com](http://www.BlueAsh.com), [www.BlueAsh.org](http://www.BlueAsh.org), and [www.BlueAsh-OH.gov](http://www.BlueAsh-OH.gov) will all "point" you in the right direction....

Start getting ready now for the **neighborhood clean-up day activities** set for **Sat., May 1**, at the City's Service facility at 6131 Interstate Circle! The popular **free shredder service**, first offered during last fall's clean-up day activities, will be continued this year. Residents may bring **up to four standard size file boxes** of documents for shredding (expanded from last year); however, **no business records** will be accepted. Residents will need to bring proof of Blue Ash residency (such as a valid driver's license and another item showing your address, such as a utility bill, etc.). In addition to the shredding service, the **dumpsters at the facility will be accessible** to our residents only. Questions regarding these activities should be directed to 686-1250 weekdays between 7AM and 3:30PM. More info is also available on the Public Works section of [BlueAsh.com](http://BlueAsh.com)....

Beginning Mar. 1st, **brush will be collected curbside** on a once-a-week basis through the end of October by City Crews utilizing the City's chipper machine. Please do not mix leaves, flowers, mulch, bush trimmings, grass, wood fencing, rocks, or lumber in with the brush. The machine used for this service is not designed to accept these materials and possible damage to the machine, or bodily harm to a City worker, could occur. Please have brush out to the curb by 6:30 AM Monday morning. Brush put out after City crews have already serviced a street will be collected the following week. Brush must be placed near the edge of the street or curb (within the City's right of way). Please do not place brush in the street, on the sidewalk, or near a parked car or fire hydrant. Brush must not be larger than 12 inches in diameter. Stumps and root systems must be detached. For large amounts, it's helpful to have several small piles rather than one large pile. Remember too that small amounts of brush may be placed directly into your Rumpke waste wheeler, and that wood chips are available at no charge to residents by calling 686-1250....

On Mon., April 12, City crews will offer a **one-time springtime collection of leaves** when raked to the curb. Please make sure leaves are out by 6:30AM, Mon., April 12th, for collection by the City. Leaves put out after City crews have already serviced a street will not be collected and will need to be bagged or containerized for collection by Rumpke on the normal collection day. Please do not mix branches, trimmings, or grass in with leaves. We encourage smaller amounts of leaves to be placed directly into your Rumpke Waste Wheeler. For more information call 686-1250.



Blue Ash **parks and tree professionals** report that there has been **no confirmed (by testing) sighting of the Emerald Ash Borer (EAB)** in Blue Ash to date. The City's plan is to continue to monitor the situation and to act if/when necessary. Unfortunately, there is no real solution to the issue as it would not be cost effective for the City to start removing Ash trees, and any treatments are extremely expensive and have not proven to be effective on a long-term basis. Any updates regarding this issue will be posted to the [BlueAsh.com](http://BlueAsh.com) website....

Just a reminder that the **Tuesday evening Concerts in the Park** will take place this year in the **Amphitheatre**. You may recall this concert series was temporarily relocated to the Square, mostly due to safety and parking concerns at the Amphitheatre location while construction was underway at the Rec Center. However, with construction complete, Council decided (in 2009) that the series would return to its original home in 2010. The first concert in this series is June 8....

Did you hear that **Blue Ash's July 4th event** is being **relocated** to the northwest corner of Reed Hartman Highway and Lake Forest Drive? Our **safety professionals** would like to remind all citizens to **enjoy a safe 4th of July by leaving fireworks to the professionals**. Fireworks, even sparklers, can be dangerous. Instead of putting your family and neighbors at risk, come enjoy Rozzi's display - it's second to none in the tri-state region! Read more about the event in the Recreation News article in this newsletter.

## COMMUNITY CONNECTIVITY UPDATE...

Work progressed throughout 2009 on the City's ongoing program to improve the connectivity between neighborhoods and businesses to important City resources such as the Recreation Center, downtown, parks, Municipal & Safety Center, etc. In 2009, this connectivity was enhanced by construction of sidewalks and multi-use paths. The goal of the overall program is to provide a robust network of connecting paths throughout the City for use by pedestrians and bicyclists, including to the City's future 130-acre signature park at the airport. In 2009, sidewalks/paths were constructed on Plainfield Road between Glendale-Milford Road and Foxhollow Drive, on Mohler Road between Carpenter's Green and the Golf Course Maintenance Facility then to Carpenter's Run, on Creek Road from Tech Woods Circle to Kenwood Road, and at the Cooper/Plainfield Road intersection to connect to the Golf Course gazebo and picnic shelter. Also in 2009, improvements were made to sidewalks and pedestrian ramps at the Reed Hartman Highway/Cornell Road intersection and

the Reed Hartman Highway/Peppermill Lane intersection.

Potential projects in 2010 include the addition of sidewalk on Cooper Road between Reed Hartman Highway and Plainfield Road (also including curb and gutter improvements) and the addition of sidewalk on Reed Hartman Highway between Glendale-Milford and Creek Roads.




*Pictured above left is sidewalk placed in 2009 along Mohler Road & above right is sidewalk placed in 2009 along Creek Road. (Both photos shown were taken in 2009 while under construction.)*



**CITY OF BLUE ASH**  
 4343 Cooper Road  
 Blue Ash, Ohio 45242-5699  
 (513) 745-8500

**PRSR STD  
 U.S. POSTAGE  
 PAID  
 CINCINNATI, OHIO  
 PERMIT NO. 2411**

## ... Your Spring 2010 Blue Ash Community Newsletter!

*This newsletter has been printed on recycled paper!* 

### MEMORIAL DAY PARADE

Applications are being accepted now for the 2010 Blue Ash Memorial Day Parade which is set for Monday, May 31, 2010 (Memorial Day). The 2010 parade will mark the 58th annual community event and parade dedicated to recognize contributions by veterans.

Any veterans group, business, community group, neighborhood association, sports team, or others interested in participating in this year's parade should call 745-8500 for information or stop by the Municipal & Safety Center at 4343 Cooper Road or the Recreation Center at 4433 Cooper to pick up an application. The application is also available online through the Blue Ash News section of the website ([www.blueash.com](http://www.blueash.com)) or on the event listing within the calendar of events. There is no fee to participate in the parade, but registration is required.

The parade will begin at 10:15 AM, and the route will be the same as past years: beginning on Reed Hartman Highway near Cooper Road, traveling east on Cooper to Kenwood, south on Kenwood to Hunt, and east on Hunt to the Veterans Memorial, where the ceremonies will be held.

The parade is a fun and easy way for your group to get involved in the community and to pay tribute to those veterans to whom our country owes so much. Don't put it off - submit your application now! Applications are requested by May 10th. For more info, call 745-8500 weekdays between 8AM and 5PM or e-mail [administration@blueash.com](mailto:administration@blueash.com).



### IT'S CENSUS TIME, BLUE ASH!

Did you know that the Census is required by the Constitution to take place every ten years, and that its purpose is to count every resident in the United States? The Census helps communities receive \$400+ billion in federal funds each year for things such as hospitals; job training centers; schools; senior centers; bridges, tunnels, and other public works projects; and emergency services. The data collected also helps determine the number of seats each state has in the U.S. House of Representatives. In March, Census forms will be delivered to every resi-

dence in the U.S. and Puerto Rico. It will contain ten short questions - one of the shortest in history. Just answer the short questions and mail the completed form back in the postage-paid envelope provided. If you don't mail the form back, you may receive a visit from a Census taker, who will ask you the questions from the form in person. Also remember too that any personal data is protected under federal law, protecting your identity and the information provided on the form. More information about the Census process can be obtained from <http://2010.census.gov>.

### PROPERTY MAINTENANCE REMINDERS...

Blue Ash is a great place to live because, for the most part, Blue Ash residents take pride in their homes and neighborhoods. The City's property maintenance codes were created to promote the health, safety, and well-being of residents and neighborhoods through encouraging adherence to City codes. Compliance protects property values and neighborhoods against deteriorating influences. The City's property maintenance personnel regularly identify code issues and respond to complaints regarding potential violations. Spring is a great time to assess your property, and we can make it easier! The City has developed a property maintenance

checklist to assist in evaluating the exterior condition of your property. The checklist can be found within the Community Development portion of [BlueAsh.com](http://BlueAsh.com) (under the "municipal services" section, then click "planning-zoning-permits"), can be picked up at the Community Development Office at City Hall, or can be mailed or faxed upon request by calling 745-8520.



Together, we can make sure Blue Ash remains a desirable residential and business community for all to enjoy.