



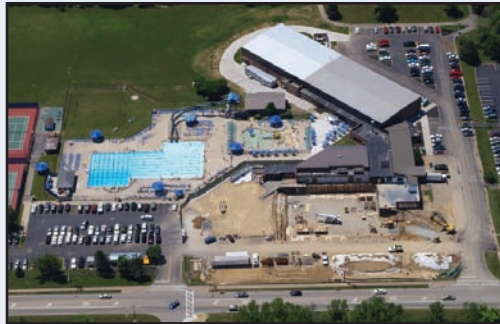
### RECREATION CENTER, GOLF COURSE & FUTURE AIRPORT PARK UPDATES

Progress continues on these major capital efforts of your community, all made possible by voters' passage of Issue 15 on the November 2006 ballot.

#### RECREATION CENTER

As you can see simply by traveling on Cooper Road, construction is well underway on your future new Recreation Center! The project is on schedule, and at the writing of this newsletter, foundation walls and the basement floor for the bulk of the new building, along Cooper Road, were completely poured. The assembly of structural steel began in late July, and will continue for about three months. Work on the area for the future new locker rooms (which does not have base-

ment below and is in the vicinity of the former concession area/activity rooms), will also take place during this time. We expect the roof to be on by mid to late October.



*Aerial photo of the Recreation Center construction taken in mid June 2008. Phase I of the project, construction of the new gym towards the back (top of photo), was complete early in 2008. See more photos on next page.*

*(Project Update article continued on Page 2.)*

### DOWNTOWN DEVELOPMENT UPDATE

All Blue Ash residences should have received a mailing from the City in late June explaining a development opportunity for our downtown. Although our intent with this newsletter article is not to restate that mailing's content in its entirety, in summary, this downtown development potential includes the existing Towne Square and Veterans Memorial area, as well as an adjoining business building which formerly housed Re/Max and other tenants. Through a partnership with the Miller-Valentine Group, a respected developer who is well-known for its ability to develop mixed-use and pedestrian facilities with quality amenities, the City is at the beginning of this multi-step process intended to improve our downtown area and to

*(Downtown article continued on Page 3.)*

## "THIS IS IT," BLUE ASH! INFO ON THE 2008 TASTE OF BLUE ASH - AUGUST 22, 23 & 24!

Join the City of Blue Ash for great tunes, treats, and terrific times at the 23rd annual Taste of Blue Ash Friday through Sunday, August 22, 23 & 24, in downtown Blue Ash.



The Taste presents an excellent opportunity to sample a variety of fine fare from over 20 area restaurants serving a variety of American, French, German, Greek, Indian, Italian,

Lebanese, Mediterranean, Mexican, Japanese, and Thai dishes. The Towne Square stage will again host national level entertainment each evening of the event, including WAR on Friday, Kenny Loggins on Saturday, and Eddie Money on Sunday (see schedule on next page). The Go Bananas comedy stage will also offer a taste of the area's best family-friendly comedy and a comedian/ventriloquist sure to make you laugh.

*Kenny Loggins takes the Blue Ash Towne Square stage on Saturday, August 23, 2008, at Blue Ash's 23rd annual Taste of Blue Ash. See next page for more details about the event, including the complete national entertainment schedule.*



*(Taste info continued on Page 2.)*

### IN THIS EDITION ...

<i>Rec Center, Golf Course &amp; Future Park</i> ..1-2	<i>Raymond Walters College News</i> .....5
<i>Taste of Blue Ash</i> .....1-2	<i>Community Bulletins</i> .....6
<i>Downtown Development Update</i> .....1, 3	<i>Blue Ash Airport Days</i> .....6
<i>Beautification Week Results</i> .....3	<i>Blue Ash Notes</i> .....7
<i>Fall Recreation</i> .....4	<i>Residential Tree Program</i> .....Back
<i>Sister City Update</i> .....4	<i>Veterans Day Ceremonies</i> .....Back
<i>Public Works Updates &amp; Reminders</i> .....5	

A Newsletter Published by the City of Blue Ash, Ohio  
 4343 Cooper Road  
 Blue Ash, Ohio 45242-5699  
 (513) 745-8510  
 administration@blueash.com  
 Internet: www.blueash.com



## TASTE OF BLUE ASH 2008 (continued from Page 1)

Free shuttle bus service will run continuously Friday from 6PM to Midnight, Saturday from 1PM to Midnight, and Sunday from 1PM to 10PM from Maple Dale Elementary at 6100 Hagewa Drive, Raymond Walters College at 9555 Plainfield Road, Greene Intermediate School at 5200 Aldine Avenue, and Ursuline Academy at 5535 Pfeiffer Road. Note: because of the construction at the Recreation Center, there will be NO SHUTTLE SERVICE from the Municipal & Safety Center/Rec Center at 4343 and 4433 Cooper Road.

A Family Fun Area will feature activities to keep everyone in your family entertained, including festival rides, inflatable toys, carnival games, family-friendly stage entertainment, clowns, and a magician, just to name a few.

Blue Ash would like to thank our generous sponsors, including presenting sponsor Toyota, as well as the following other sponsors for their generosity in helping to make this special event possible: 700WLW, Academy Rental, Inc., Cincinnati Concession & Catering, The Cincinnati Enquirer, Cincinnati Family Magazine, Coca-Cola, DoubleTree Guest Suites (Cincinnati/Sharonville), Hills Communities Development, The Kroger Co., LSI Industries, Ohio Lottery, Rumpke, Schumacher Dugan Construction, SmarTravel, and Time Warner.

Event rules: no coolers, glass containers, alcohol, or non-service pets permitted to be brought to the event. No photographs, audio, or video taping of national entertainment. Backpacks and oversized purses are subject to search.

For more info about this or other Blue Ash events, visit the calendar of events at BlueAsh.com or call 745-6259.

### 2008 TASTE OF BLUE ASH MAIN STAGE ENTERTAINMENT

(all concert times are approximate - BOLD/CAPS indicate NATIONAL LEVEL ENTERTAINMENT)

**FRIDAY, AUG. 22**  
(event hours: 6 - 11PM):

7PM.....The Soul Pocket Band

9PM.....**WAR** (hits include "Spill the Wine," "Cisco Kid")

**SATURDAY, AUG. 23**  
(event hours: NOON - 11PM)

5PM.....The Modulators

8:15PM....Blue Ash Idol Winners

9PM.....**KENNY LOGGINS** (hits include "Celebrate Me Home," "A Love Song," "This is It," "Footloose")

**SUNDAY, AUG. 24**  
(event hours: NOON - 9PM)

3PM.....The Menus

7PM.....Eddie Money (hits include "Two Tickets to Paradise," "Baby Hold On")

No tickets are needed, and there is no admission charge to the event or any concert.

## PROJECT UPDATE ARTICLE - Rec Center, Golf Course, Future Park (continued from Page 1)

Afterwards, through the more harsh winter months, crews and trades will be focusing on all interior work.

Timing for the project remains the same, with the new building expected to be completely done by late spring/early summer 2009. The staff is hoping that a portion of the new building (perhaps the new fitness and locker room areas) may be occupied as early as March or April 2009.

### GOLF COURSE

Conceptual architectural and engineering planning continues on the future golf course improvements planned to begin in late 2009 to mid 2010 (exact start date undetermined at this time). A new Golf Course clubhouse would include greatly expanded banquet facilities, golf functions, and dining options. In addition to this new multi-function clubhouse, the City continues to refine plans to improve the overall golf experience in Blue Ash. Preliminary options range from relocation of several holes to the new 130-acre park near the airport (towards Plainfield); the addition of a golf driving range facility; and perhaps even a new family-friendly, short course golf facility. The City will continue to work on various options over the next year or so for improved golf facilities, but at a minimum, anticipates that whatever new development options are pursued, they will have an environmentally-sensitive focus.

### FUTURE 130-ACRE SIGNATURE PARK

As with the future golf course improvements, conceptual planning continues on the future 130-acre park to be located near the airport. Earlier this summer, Blue Ash learned that it will be the recipient of State of Ohio capital funding (2008-09 fiscal year period) via appropriation of \$150,000 for the future Blue Ash Performing Arts & Conference Center. Cincinnati also continues its work to reconfigure the airport facilities. Cincinnati has until August 2010, with two one-year optional extensions to complete this relocation. Most of Cincinnati's efforts are geared towards securing funding for relocation efforts, including at the federal level. Once plans to reconfigure the airport are finalized and funded, Blue Ash can begin preliminary planning and preparation for the future park.



More construction photos of the Recreation Center project taken in June & July.

make it an even more fun place for families to gather. Several open houses were held in late June and early July to provide further opportunity for residents to learn first-hand about this project.

On July 21st, a referendum petition was filed with the City. The petitioners requested to have the ordinance which authorized the City Manager to negotiate a downtown development contract with Miller-Valentine (Ordinance No. 2008-32) rescinded. We hope the summary below is helpful to explain the process required within our City Charter:

- ✓ On July 25, the Mayor appointed the required committee who, together with the Clerk of Council and the Hamilton County Board of Elections, is charged with the responsibility of determining whether the petition is valid and sufficient according to law. The committee has ten days to complete this task, and the committee's determination will be presented at Council's next regular meeting (August 14).
- ✓ On August 14, Council will refer the issue to a Council committee to hold a public hearing and to report its recommendations at the next regular meeting of Council. Though not scheduled at this time, the public hearing would be held so that committee's recommendations would be reported at the September 11 Council meeting.
- ✓ The Council committee would likely recommend (at the Sept. 11 meeting) that Council either: (1) pass legislation repealing the ordinance in question, or (2) that the question of the ordinance be submitted to a vote of the electorate.

- ✓ The Council decided plan of action (which requires legislation) would be scheduled for inclusion upon the agenda of the next regularly scheduled meeting (September 25). That legislation would either repeal the ordinance or submit the vote to the electorate.
- ✓ If Council would pass legislation repealing the ordinance in question (2008-32), then there would be no need for a vote by the electorate since the ordinance in question would no longer be in effect.
- ✓ If Council would pass legislation to submit the vote to the electorate, then the Board of Elections would be appropriately notified. Because Sec. 18.04 of the Charter requires that the vote of electors take place "at the next regular or primary election to be held not less than sixty days after the filing of appropriate notice with the Board of Elections," then voters would have, at the earliest, the opportunity to vote on this issue in a 2009 primary.

In the meantime, the City and Miller-Valentine continue financial due diligence work and review associated with the project. This very important step or milestone, one of many required in this process, was anticipated from the beginning and is necessary so that a fully-informed decision can be made by Council as to whether or not to move forward. It is also necessary so that voters can make a fully-informed decision when voting on the matter.

We encourage residents to check the website at [www.BlueAsh.com](http://www.BlueAsh.com) for additional information regarding downtown development. Please remember that the City's website is the source for the most accurate information regarding this and other important events in your community!

## BEAUTIFICATION WEEK RESULTS

Kudos to this year's Beautification Week nominees and selections – your hard work is noticed and appreciated! The City received over 36 nominations of homes throughout Blue Ash, and over 300 votes for the "people's choice" were cast. Winners will be presented with awards at the August 14 Council meeting. Those selected to receive an award this year include:



### **RESIDENTIAL WINNERS:**

#### **Committee's Choice Winner:**

10116 Kenwood Road – John Yasbeck & Maureen Menke

#### **Mayor's Choice Winner:**

10193 Zig Zag Road – Joseph Fee

#### **People's Choice Winner:**

10350 Ryan's Way – Steve & Sherri Warshaw

#### **People's Choice Finalists:**

10409 Rachel Anne Court: The Wilkes Family

10293 Ryan's Way: The Remaklus Family

11110 Woodlands Way: Ron & Barbara Sensibaugh

4727 Twinbrook Court: Michele Jack & John Andrews

### **People's Choice Finalists (continued):**

4907 Myrtle Avenue: The Pike Family

3870 Blackwood Court: The Werthaiser Family

3835 Blackwood Court: Perry Leitner

### **BUSINESS WINNERS:**

#### **Large Business:**

Ethicon Endo-Surgery  
Southwest corner of Creek & Reed Hartman

#### **Small Business:**

Children's Eye Physicians  
Towne Square Avenue



*Pictured above is this year's People's Choice residential winner: 10350 Ryan's Way - Steve & Sherri Warshaw.*

# FALL RECREATION IN BLUE ASH ...

## LADIES LUAU AT THE POOL

Wednesday, September 3rd, from Noon to 3PM, is the annual Ladies Luau at the Pool. For just \$10, enjoy a ladies-only pool event including luau-style food and beverages. Vendors will be on-site, and babysitting is available. Preregistration required ... hurry, this event fills up fast!

## DOGGIE DOO-ATHLON & OPEN SWIM

Don't miss this fun annual event and last-of-the-year opportunity to take a "dip" with your best friend on Saturday, September 6th!



The "doo" aspect of the event relates to a run, beginning at 9:30AM, and the open swim beginning at 11AM. Preregistration for the run is required, and the open swim is free for members (\$5 for non-members - dogs are free!).

## THURSDAY CONCERTS ON THE SQUARE

The free lunch-time concert series continues in 2008, offered each Thursday in September beginning at Noon. This year's lineup includes:



- Sept. 4: Robin Lacy & Friends (classic rock and blues)
- Sept. 11: Ooh La La Unplugged (oldies/classic rock)
- Sept. 18: The Bromwell-Diehl Band (acoustical)
- Sept. 25: Danny Frazier & Chris Goins (Americana).

## A CONCERT TO REMEMBER (BENEFIT FOR ALOIS ALZHEIMER'S FOUNDATION)

Saturday, September 6, from 3-10PM on Towne Square, a concert will take place featuring a variety of local jazz artists including Phil Frechette, Shay Astar, Jon Justice & the Blue Wisp Band featuring Mary Ellen Tanner. Although there is no admission charge to the event, nor tickets required, donations will be requested at the event to benefit the Alois Alzheimer's Association in Cincinnati. Click on [www.aconcerttoremember.com](http://www.aconcerttoremember.com) for info.

## DINNER & A MOVIE

At dusk on Saturday, September 13, at Towne Square, a free showing of *Enchanted* (rated PG) is set. Stop by one of Blue Ash's great nearby eateries before the show for dinner (no food sold at the event). Free and open to the public.

## HERITAGE DAY

Saturday, October 11th, marks the day for this fun annual event. The Nature Park sets

the scene for late 1800s Blue Ash from Noon to 6PM, and will include crafters, demonstrations, music, food, a petting zoo, pony rides, and tours of the historic Hunt House (via horse carriage ride from the Nature Park). Free and open to the public.



## HALLOWEEN WALK IN THE WOODS



This fun event set for Saturday, October 25th, from Noon to 3PM, is targeted for kids 10 years old and younger, and features trick-or-treat and other family Halloween-type activities in the Nature Park. Free and open to the public.

# SISTER CITY UPDATE

2008 is a busy year for Blue Ash's Sister City program with Ilmenau, Germany! In early May, a private tour group of 43 citizens who live in or near Ilmenau visited Blue Ash/Greater Cincinnati as part of an approximate two-week visit to the USA/Canada. Other areas visited included Washington DC; New York; Niagara Falls, Philadelphia, Boston, and portions of southeastern Canada. The group ended their visit in Blue Ash, and it was reportedly unanimous: they were very impressed with Blue Ash and thoroughly enjoyed their visit to this area of Ohio! In addition to enjoying time in Blue Ash, the group also visited the US Air Force Museum in Dayton, several area shopping destinations, Union Terminal, Northern Kentucky, and much more during their four-day stay here. The group stayed in the Blue Ash Crowne Plaza. Word has it that the next tour is already being planned for the near future!

The next official delegation from Ilmenau is set to visit in mid September 2008. Though plans are in the making at the writing of this newsletter, approximately 13 delegates are expected, including repre-

sentatives from Ilmenau City Council and Administration, the Ilmenau business community, and the Ilmenau educational community.



Highlights of the tour group from Ilmenau that visited Blue Ash in early May 2008. The group also placed a wreath at the Veterans Memorial.

## PUBLIC WORKS SERVICE UPDATES AND REMINDERS ...

Below are just a few reminders of seasonal public works services coordinated through your City's Service Department. Questions can be directed to our Service Department at 686-1250.

### TREE & SHRUBBERY TRIMMING REMINDER

Just a friendly reminder that homeowners whose property fronts a City street or public right-of-way are responsible for trimming trees and/or shrubbery if they become overgrown and present a safety hazard or danger to motorists and pedestrians.

All trees and shrubs should be trimmed to have a clear height of ten feet above the surface of sidewalks and twelve feet above the surface of a street or roadway. Trees and shrubbery growing out onto the sidewalk should be trimmed back behind the sidewalk to allow safe passage by pedestrians.

### BRUSH/CHIPPER SERVICE CHANGE NOTICE

Beginning September 1, 2008, the City's curbside brush/chipper service procedures will change. Instead of this service occurring on the weekday following your normal garbage collection day, the City will provide

this curbside service on Monday or Tuesday of each week. Crews will canvass the City beginning Monday, with the entire City to be serviced by the end of the day on Tuesday each week from March through October, with pickup during November through February to be made on a call-in basis (686-1250). Some circumstances may require this service to be extended to additional days of the week, such as following strong storms, etc.; however, the City believes this change will result in more efficient pickup service and use of staffing. Small tree limbs can be tied into bundles no longer than 5 feet and placed with your normal garbage pickup. Residents are encouraged to use this service provided by Rumpke. Don't forget too that wood chips are available at no charge to residents ... and we'll even deliver!

### CURBSIDE LEAF PICKUP

Curbside leaf pickup service by City crews begins in mid-October and continues through mid-December, with no bagging required during this period. During other times of the year, leaves may be placed in regular containers or bagged for pickup by

Rumpke on your regular collection day. Unbagged leaves should be brought to the curb or to the berm of the road if no curb exists. Please make sure leaves are not placed in the ditch line as this will clog the storm sewer system, and please do not mix any other yard waste items in with the leaves, such as grass, twigs, or flowers. City crews attempt to service each street weekly during this period; however, during heavy volume periods, in the event of a snow/ice emergency, or due to equipment breakdown, it may take longer to complete a city-wide sweep. Remember too that crews are not able to pickup piles of leaves when parked vehicles are on top of or blocking the piles. These piles will be picked up the following week, as crews will not return after the vehicle has been moved.



## RAYMOND WALTERS COLLEGE NEWS

Raymond Walters College (RWC) is set for a busy fall and is currently enrolling students for classes. And did you know that RWC is launching its own Speaker's Bureau? The Bureau includes faculty, staff, and alumni offering topics of various educational and professional venues. Just some examples of topics include history, allied health, American folk music, preparing for international travel, and special topics that can be tailored to your organization. And here's the best part ... it's a FREE community service! Contact Gwendolyn Dean at 936-1577, or E-mail Gwendolyn.Dean@uc.edu for more informa-



tion or to schedule a speaker for your upcoming event or meeting.

RWC recently announced its 2008-09 cultural events lineup open to everyone in the community. Events are summarized below. Please call RWC at 745-5705 or E-mail colrel1@ucrwcu.rwc.uc.edu for more information or to order tickets...

**ARTrageous SATURDAYS** is an award-winning series geared for parents and their children ages 3-10 and is co-sponsored by the City of Blue Ash. All performances are on Saturdays at 11AM and 1PM in the RWC Theater on the Blue Ash campus:

- Oct. 11, ArtsPower presents "Amber Brown is Not a Crayon"
- Nov. 22, Catskill Puppet Theatre's "The Lion's Whiskers"

- Jan. 24, Cincinnati Ballet's "Raising the Bar"
- Feb. 28, Das Puppenspiel's "Peter and the Wolf"
- Mar. 28, ArtReach's "Town Mouse, Country Mouse"

### RWC's RHYTHM 'N BLUE ASH CONCERT

**SERIES** is a concert series geared for adults and all concerts are held on Saturdays at 8PM in the RWC Theater:



- Oct. 11, The Andy Brown Quartet, featuring Petra van Nuis
- Nov. 22, The Greencards
- Jan. 24, Mingus Dynasty
- Feb. 14, Harry Pickens Trio special Valentine's Day presentation of "Give Me Your Valentine"

## COMMUNITY BULLETINS...

The **BLUE ASH/MONTGOMERY SYMPHONY ORCHESTRA's (BAMSO)** annual Labor Day concert is set for 6PM, Monday, September 1, at Blue Ash Towne Square near Hunt and Cooper Roads (rain location: Sycamore Junior High, 5757 Cooper Road). This performance will feature the winners of the Young Artist Competition, the Cincinnati Brass Band, the Cincinnati Choral Society, and much more! Symphony performances are free and open to the public. Visit [www.bamso.org](http://www.bamso.org), or call Susan Pace at 232-0949 for more info. And more BAMSO news ... congratulations to the three recent additions to the Symphony Board:



Fred Brink, Ka-Ron Brown Lehman, and Karen McDowell.

The **BLUE ASH WOMANS CLUB** open house and highly-anticipated white elephant sale is set for Monday, September 8, 7PM, at the Blue Ash Presbyterian Church. The Club's annual craft show is set for Saturday, December 6, 10AM to 4PM, at the Blue Ash Presbyterian Church. For more info about Club activities, call 891-4043.

**MATTHEW 25: MINISTRIES' (M25M)** Fighting Hunger 5K Run & Walk is set for Saturday, November 8, and kicks off their annual

"Staying on Top of Hunger" Food Drive set for November 8 - 14. The 5K race begins at the M25M 132,000 square-foot facility at 11060 Kenwood Road and winds through Blue Ash. The course is USATF certified, and all participants receive a long-sleeve shirt, bag, post-race beverages, and other gift items. Participants are also automatically registered to win one of dozens of door prizes. To register for the race, contact Kelly Weissmann at 347-3255, or E-mail [coprdog@fuse.net](mailto:coprdog@fuse.net). All proceeds from the race and food drive benefit M25M's work to provide local, regional, national and international humanitarian and disaster relief. All donated food products will be distributed in the Greater Cincinnati area over the holiday season.

More **M25M** news ... in April, a team from M25M traveled to Nicaragua to review progress of existing programs and to explore opportunities for new ventures.



*The Blue Ash based M25M facility on Kenwood flies the flags of the nations where assistance has been sent.*

M25M's magnet village of Paso Real, serving a region of about 25,000 people, is doing well. In addition to its warehouse, feeding, and community centers, M25M co-sponsors

with Blue Ash/Montgomery Rotary, a hydro-electric facility. The global food crisis, with basic food prices for rice, beans, wheat, maize, and other food staples increasing by as much as 300% since 2007, is life threatening in countries such as Nicaragua, where 75% of the population lives on less than \$1 a day. Mass malnutrition is a major threat as people are forced to use 80% or more of their income just to buy food. Why not call M25M at 793-6256 to see how you can help ensure the children in developing countries do not die from lack of food and basic necessities! M25M, selected as one of the "Best Charities in America," is proud that more than 99% of cash and in-kind donations go toward programs.

The **BLUE ASH/MONTGOMERY ROTARY CLUB (BAMRC)** honored Bill Sikute as its Blue Ash Citizen of The Year at its July 1 meeting. Blue Ash Vice Mayor Mark Weber introduced Bill and presented the award at the July 8th BAMRC meeting. Bill, who recently retired from the Blue Ash Planning Commission, has served the community in many volunteer roles since 1976. He has also been a strong advocate of the Blue Ash Airport and its Advisory Committee. Bill, and his wife Janet, a retired Sycamore teacher, recently retired and relocated to their home in Norris Lake in Tennessee. Congrats and best of luck, Bill!

## BLUE ASH AIRPORT DAYS - SEPTEMBER 13 & 14

The 12th annual Blue Ash Airport Days event is set for Saturday and Sunday, September 13 and 14. This high-flyin' event takes place at the Blue Ash Airport, and event hours are 10AM - 4PM each day. Admission at the gate is \$10 (\$8 online). Kids 12 and under and military personnel with ID are admitted free. Proceeds again this year will benefit the Heart Center at Children's Hospital Medical Center.

Below is a summary of a few of the highlights planned:

- Expect lots of thrills both days during the aerial shows beginning at 1PM. The shows spotlight nationally known performers, such as Ed Hammill, The Red Eagle Team, Matt Chapman, and more.
- Both days will feature a KidZone, airplanes on display, vendors, flight simulators, food, interactive activities, helicopter/airplane rides, and the Monster Truck. And new this year: live simulated battle with WWII re-enactors.

- "My Gal Sal," the B-17 being restored for eventual placement in The Ultimate Sacrifice Memorial, will be on display both days, along with other historic Warbirds.
- The car show has been moved back to Sunday, and Saturday will feature a 5K race featuring a new course. A pancake breakfast will be held each day from 8AM to 11AM.

Visit [AirportDays.com](http://AirportDays.com) or call 489-2022 for the latest info on this fun weekend celebrating aviation...brought to you by your friends at the Blue Ash Airport.

*(Airport Days is presented with the support of the City of Blue Ash, but please note that this is not a City event.)*



*The "My Gal Sal" B-17 restoration project will be on display at the Airport Days event.*

## BLUE ASH NOTES...

Blue Ash's **Trick-or-treat activities** will be observed on **Halloween, Friday, Oct. 31st**, from 6 to 8PM (as is noted on your community calendar). Let's make it a safe one, Blue Ash! ....

Don't forget that **autumn** is a beautiful time to visit your award-winning **golf course**. Even if you don't play golf, why not try the **Sandtrap Sandwich Shop** in the clubhouse for your **next lunch** outing? In addition to a spectacular view, the Sandtrap offers tasty seasonal specials, fresh sliced deli sandwiches and more. Ice cold soft drinks, or an ice cold beer (if you are of age and so inclined), will complete your dining experience! Tee times are available daily by calling 686-1280....



Did you know that the **Blue Ash Police Department** participated in the **U.S. Marshals 2008 Operation FALCON** (Federal and Local Cops Organized Nationally) in early June? Led by the U.S. Marshal Service in Cincinnati, Operation FALCON **combined the collective efforts** of 22 Greater Cincinnati area law enforcement agencies in one of the area's largest-ever fugitive initiatives, **focusing on capturing** individuals wanted on **felony charges**. During this week, the U.S. Marshals arrested 72 fugitives and cleared 133 warrants. Blue Ash Patrol Officer **Jun Cho** was assigned to this week-long operation....



**Blue Ash welcomes ST Media Group International** to our community. Earlier this summer, **ST Media** moved 70 employees to a 26,000 square-foot facility on Cornell Park Drive. ST Media Group has a **worldwide reputation** for being the leading educator and authority for the **visual communications market**. The 102-year old company has been keeping industry professionals informed through its magazines, online content, and tradeshows geared toward the visual marketing industry. **Thanks for choosing Blue Ash!**

When the **employees of Osterman Cron**, a Blue Ash based office furniture business on Millington Ct., heard they were going to be recognized for being a **top seller of Kimball's** furniture, they were absolutely **thrilled**. And why not, since the **grand prize** was use of Kimball's **corporate jet** for



*The Osterman Cron team ready to board the Kimball jet heading for New Orleans.*

a weekend anywhere in the United States! While they could have chosen to use this unique gift for a weekend of self-indulgence, instead, they chose to take the plane to **New Orleans**. A team of eight, including one of the company's partners (Joel Osterman), left June 28th to **volunteer** with an **agency that helps people** still struggling with the aftermath of Hurricane Katrina. Mr. Osterman reports that as the group was leaving New Orleans, "there was not a dry eye in the car." The **team** was very **excited** and proud to have had the chance to, in a small way, help the people in New Orleans. We're **proud** to have **Osterman Cron** as a member of our corporate community!

Congratulations to **Blue Ash's newest hotel**, the **Hilton Garden Inn** at 5300 Cornell Road (at Cornell Park Drive), which officially opened for business in **late June!** The Mayor participated in the official ribbon cutting on June 26. The beautiful new hotel has 122 rooms (nine of those suites), along with a Great American Grill Restaurant serving breakfast, lunch, and dinner. With the addition of the Hilton Garden Inn, Blue Ash now has **16 hotels** within its corporate boundaries....

Hats off to the **Blue Ash Nursing Care Center** which celebrated National Nursing Home Week in mid May. Each day featured a different theme, and was celebrated with related events, special entertainers, music, and food. The **residents** and **staff** enjoyed this fun-filled week, including a visit from **Blue Ash Mayor Jack Buckman**, who joined in the celebration....

On July 21, a group of **Greater Cincinnati area high school educators** visited the job site of the Blue Ash Rec Center renovation and construction project. The educators, part of the **Research Experience for Teachers Program at the University of Cincinnati**, spent six weeks during the summer exploring **critical research issues** that **engineers** typically face in their professions, including construction-related projects. The participants are **seventh to twelfth grade math and science teachers**, and the program's goal is that through this experience, participating teachers will become **role models** by **applying their research experiences** in their **classrooms** and with colleagues....



*Engineer Jeff Bolchalk of Steven Schaefer & Associates, speaks to the math & science teachers at the Rec Center construction site in mid July.*

Work will continue throughout 2008 on the **Blue Ash financed Blue Ash/Hunt Roads project**. This project affects all of **Blue Ash Rd.** within Blue Ash's boundaries, and a portion of **Hunt Rd.**, between West Ave. and the railroad tracks. This **major road project** began in early 2008, with improvements to include a **new storm sewer system**, new **roadway, curbs and gutters**, possibly an expanded park and ride area, and **sidewalk**. As of late July, work on the **southern portion** of Blue Ash Road (south of the Ronald Reagan Highway access ramps) is **essentially complete**. Crews will then move towards the Hunt Road portion of this project, with the goal being to complete the majority of that portion before school begins in late August. The project is estimated to be **completed in December 2008**, and is being financed partially through a no-interest loan granted to the City through the State Capital Improvement Program (SCIP). **Motorists** are **encouraged** to avoid this construction area to **minimize inconvenience**....



Don't **forget** to visit the **City's website** regularly at **www.BlueAsh.com** to find out the **latest and most accurate news and info** about your community's most significant efforts.

## RESIDENTIAL TREE PROGRAM REMINDER

Blue Ash homeowners -- don't forget about the City's residential tree program which provides assistance for planting trees on residential properties in publicly visible locations. This program has been in place for at least the past seven or eight years, and residents have taken advantage of the program to plant hundreds of trees throughout our community.

The City is taking a close look at the overall impact on trees from events over recent years, including the very dry summer and fall months experienced in 2007, as well as potential effect from the Emerald Ash Borer. The 2007 drought particularly affected Norway Spruce and other pine tree varieties. The City urges residents to take a close look at their trees for signs of stress, loss of leaves/needles, etc. Council and Administration are considering potential expansion of the tree program to assist residents who have affected trees. Such expansion may include assistance with removal of dead trees within the public's view, relaxing of the two-tree limit per residence, etc. Keep an eye out on the News section of BlueAsh.com for details as they are finalized, or E-mail [administration@blueash.com](mailto:administration@blueash.com).

In the meantime, below are the "basics" of the tree program. Click on the "Municipal Services" section of BlueAsh.com for more info and details of this program:



- This program offers Blue Ash homeowners a discount coupon toward the cost of publicly-viewed trees (usually in front or side yards).
- To receive this discount, you must first get a coupon from us and purchase your tree through a participating nursery. To order your coupon, call 745-8500 (then dial 0), during normal office hours (weekdays, 8AM to 5PM). You will receive your discount at the time of purchase when you present the coupon to the nursery. The discount offers up to 50% off the cost of each tree, including planting, up to a maximum discount of \$150 per tree.

There are many more details associated with the program - the above is a very brief summary. Call 745-8500 (then dial 0) with questions or to order your coupon.

## VETERANS DAY CEREMONIES

Veterans Day ceremonies are set for **Tuesday, November 11**, at the Veterans Memorial beginning at 10:30AM. This year's keynote speaker is John Erby, Jr., a life-long veteran advocate who has held multiple leadership positions within numerous veteran organizations. He is a noted speaker on military history and patriotism and served in the US Army in Vietnam. The Ohio Military Band will also assist with the ceremonies, as will the Accelerated Language Lab students at the Greene Intermediate School.

Why not take a few minutes out of your Tuesday morning to attend the ceremonies and honor those special Americans who have sacrificed so much to assure OUR freedom? It's the right thing to do!

These ceremonies are coordinated by the Blue Ash Veterans Day Committee, a consortium of volunteer representatives from several

area veterans organizations, such as the American Legion, VFW, Korean War Vets, Disabled American Vets, and more. Note that the annual luncheon will not be held this year due to construction at the Recreation Center. We anticipate this part of the day's events will return in 2009.

Call 745-8510 with questions about the ceremonies.



*Pictured above from the 2007 ceremonies are Greene School students & (left) the Color Guard from American Legion Post 630.*



**CITY OF BLUE ASH**  
4343 Cooper Road  
Blue Ash, Ohio 45242-5699  
(513) 745-8500

PRSR STD  
U.S. POSTAGE  
PAID  
CINCINNATI, OHIO  
PERMIT NO. 2411

**... Your Fall 2008 Blue Ash Community Newsletter!**